

Affordable
living
in the city



PANGANI

Urban Housing Renewal Development LLP



TECNOFIN

Nairobi City County Urban Renewal Housing Re-Development Project



NAIROBI CITY
COUNTY

Cold Water and Dancing Treetops

Maasai pastoralists in the 1800s led their cattle to drink from a river they called Enkare Nairobi, meaning cold stream. They called the swampy area around the stream Nakuso Intelon, meaning dancing treetops, for the way the sun shimmered through the acacia trees. The Maasai came and went in their search for good pasture for their cattle.



In the late 1890s a campsite of tents followed by tin shacks and wood cabins joined the Maasai manyattas. The campsites belonged to the officers and crews of the Uganda Railway, at the time inching its way westward across what would become Kenya.

As the railway took shape, the new settlement grew rapidly, and more people referred to the town as Enkare Nairobi rather than Nakuso Intelon. By 1899 the name Nairobi had become better known, and the name Nakuso Intelon faded into history.

Pangani: Eclectic Hub of early Nairobi

The railway and colonial offices continued to spread into the area between the railway and the Nairobi River and up onto the Hill towards Ngong. The railway built landhies for their Indian employees behind the railway station. Other areas of the new township grew in a haphazard way without any proper planning.

Pangani, originally a camp for porters on foot expeditions, was located just outside the early municipal boundary, and it became a haven for Africans, drawn to the growing town for work.

By 1913, Pangani 'hotelis' were famous. Single women developed the village of Pangani, building Swahili square houses. They lived in one room and rented out the others. Pangani developed a Swahili ambience. It had three mosques alongside teashops and hotels. There were butcheries and barbershops as well as brothels and drinking dens for home-brewed beer.

Pangani became a very lively place, especially on Sunday afternoons when railway workers, cooks, porters and house servants came to enjoy their day off. Pangani served as the eclectic hub of Nairobi's emerging culture.



Pangani Housing Project



The Pangani Housing Project is an initiative by the Nairobi City County Government in partnership with Tecnofin Kenya Limited to renew and re-create Pangani Estate by way of providing dignified and affordable homes for residents of Nairobi.

In line with the realities of the time, Pangani Estate developed in the 1950s, accommodates 48 residents on a vast 5.2 acre property. The County Government now aims at increasing the number of units on this property to meet the growing demand for housing in the city. Pangani is strategically located in close proximity of various key facilities including schools, colleges and universities, hospitals, malls, clubs and parks, police and fire station.

In keeping with the historical race course heritage of the neighbourhood, the site layout is derived from a horse shoe. This encloses a fun social condenser for multiple age groups in the form of an amenity rich central courtyard. The large secure green space contributes to the green architecture and promotes both sustainability and freedom.

The innovative social and affordable house concepts, are a clever interpretation of multi-functional 'micro' apartments whilst the open market three bedroom duplex apartments are efficient and roomy, all ensuite masterpieces. Pangani offers exceptional value across the board.

Picture a bright Saturday morning, the singing of birds, the laughter of children, the lively engagements and peaceful calm. A true recreation of old neighbourhood ethos. Pangani is a place that you can call your own. A world class enclave of convenience and bliss. Welcome home.



1 Bedroom Social House: 25 SQM (KShs. 1,000,000/-)



2 Bedroom Social House: 50 SQM (KShs. 2,500,000/-)



1 Bedroom Apartment:

30 SQM (KShs. 1,500,000/-)



Oilibya Pangani

Equity



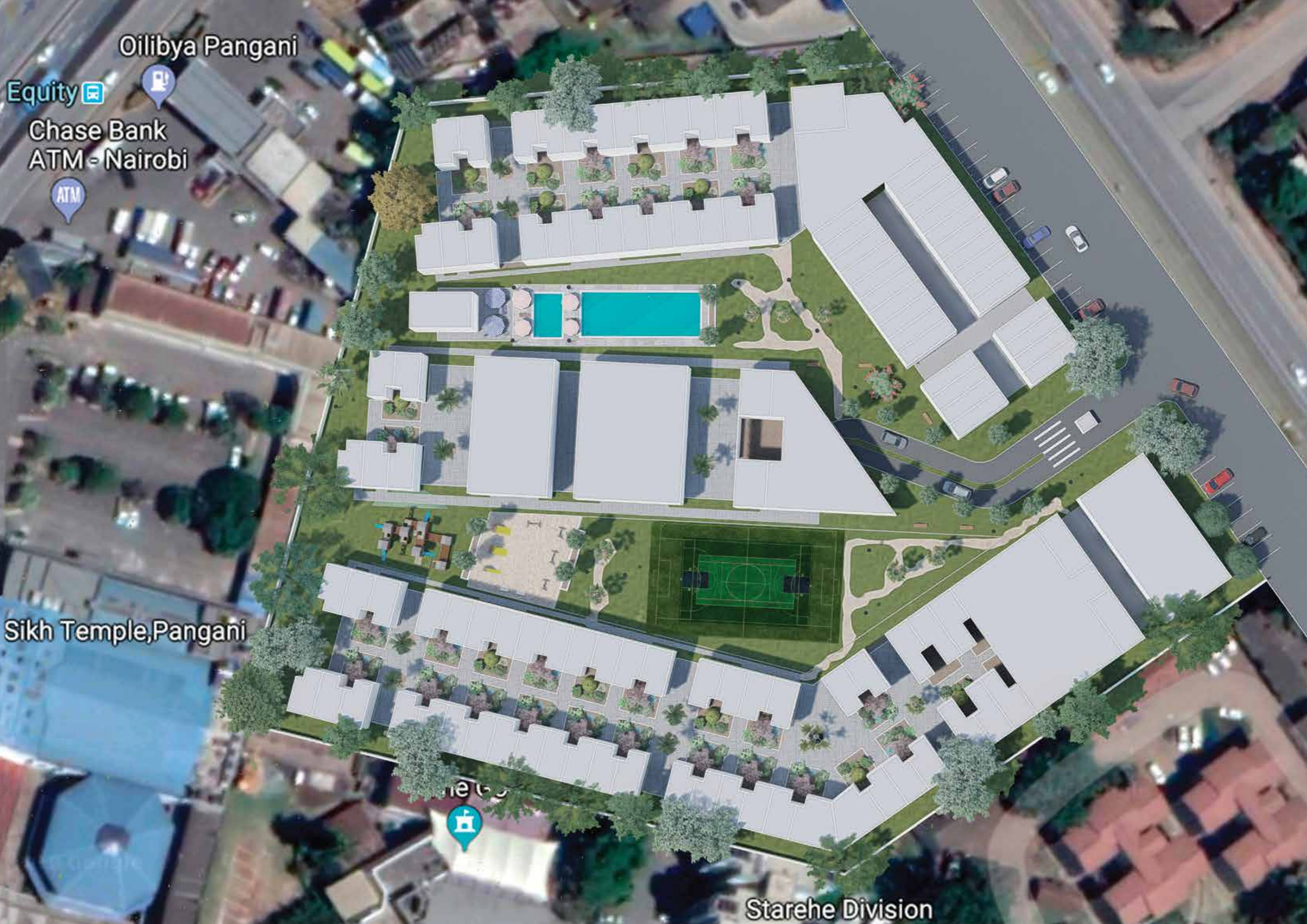
Chase Bank
ATM - Nairobi

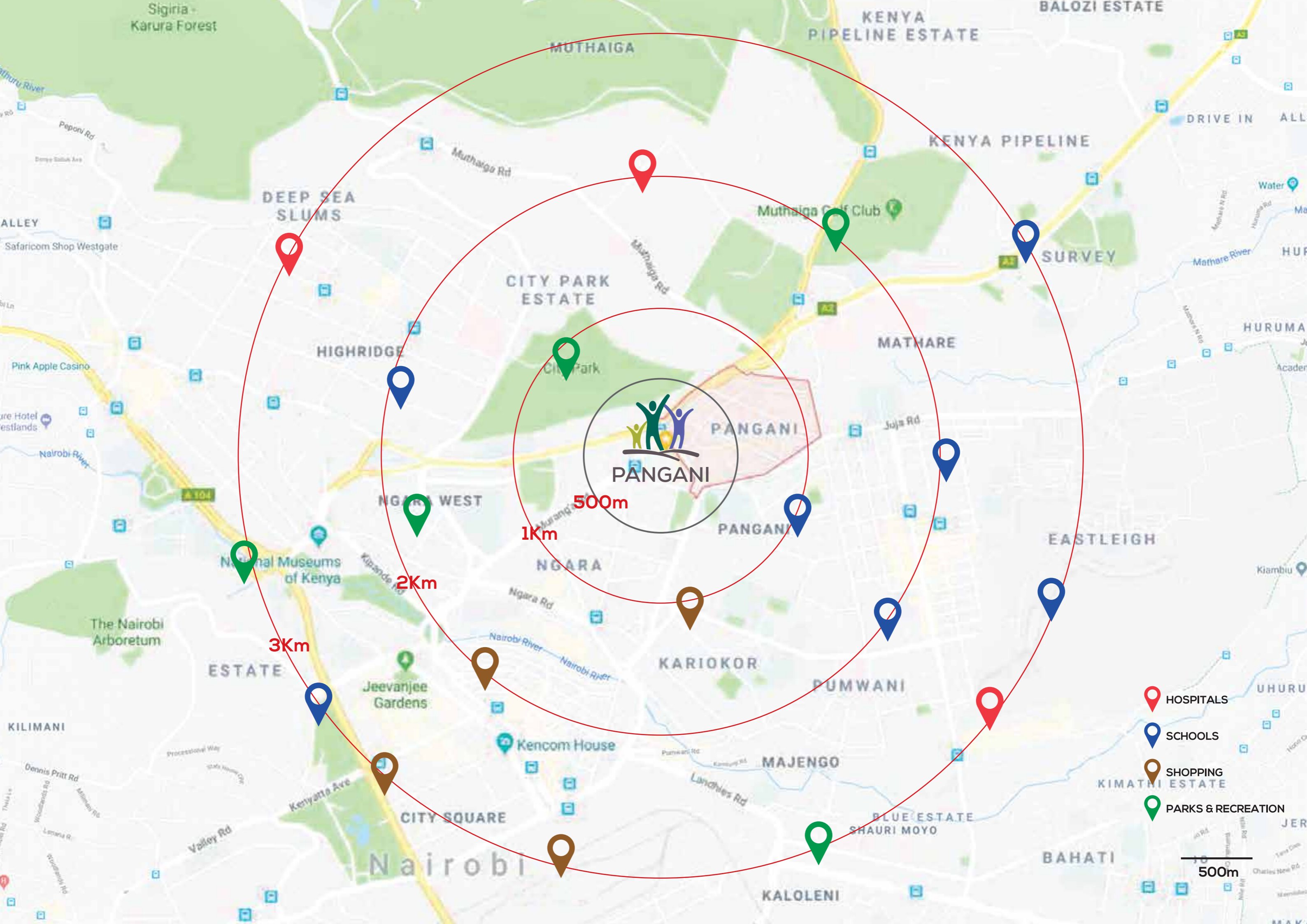


Sikh Temple, Pangani



Starehe Division





PANGANI

500m

1Km

2Km

3Km

HOSPITALS

SCHOOLS

SHOPPING

PARKS & RECREATION

500m

2 Bedroom Apartment:

40 SQM (KShs. 2,250,000/-)



3 Bedroom Apartment:

60 SQM (KShs. 3,000,000/-)



3 Bedroom Duplex (Lower Floor) :

90 SQM (KShs. 7,500,000/-)



(Upper Floor)



Lead Sales Agency

Stima Investment Co-operative Society Limited

PO Box 37895-00100, Nairobi

Stima Investment Plaza 1, Mushembi Road, Parklands

Tel: +254 713 905 195, +254 731 298 917, +254 709 495 000

E-mail: customercare@stimainvestment.co.ke

Website: www.stimainvestment.co.ke

